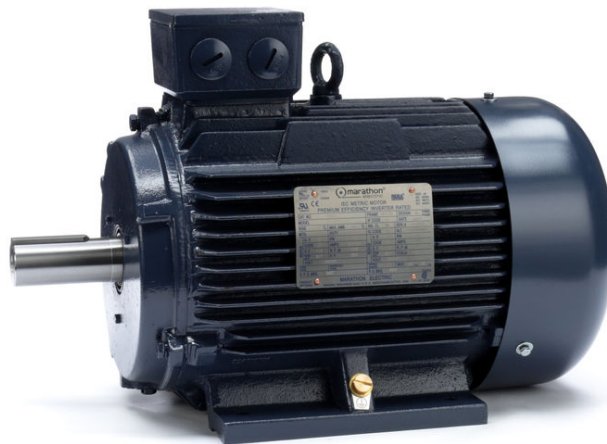


PRODUCT INFORMATION PACKET

Model No: 132MTFC6536

Catalog No: R331A

10 HP General Purpose, 3 phase, 1800 RPM, 230/460 V, 132M Frame, TEFC
Cast Iron TEFC Motors



Nameplate Specifications

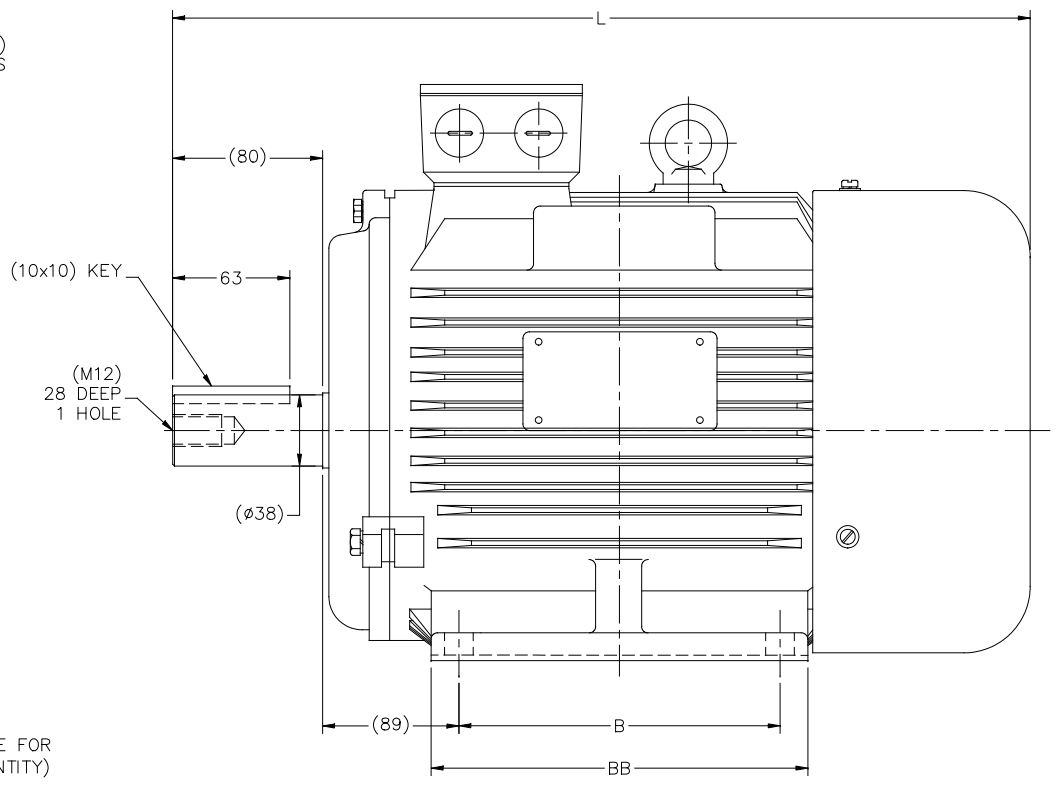
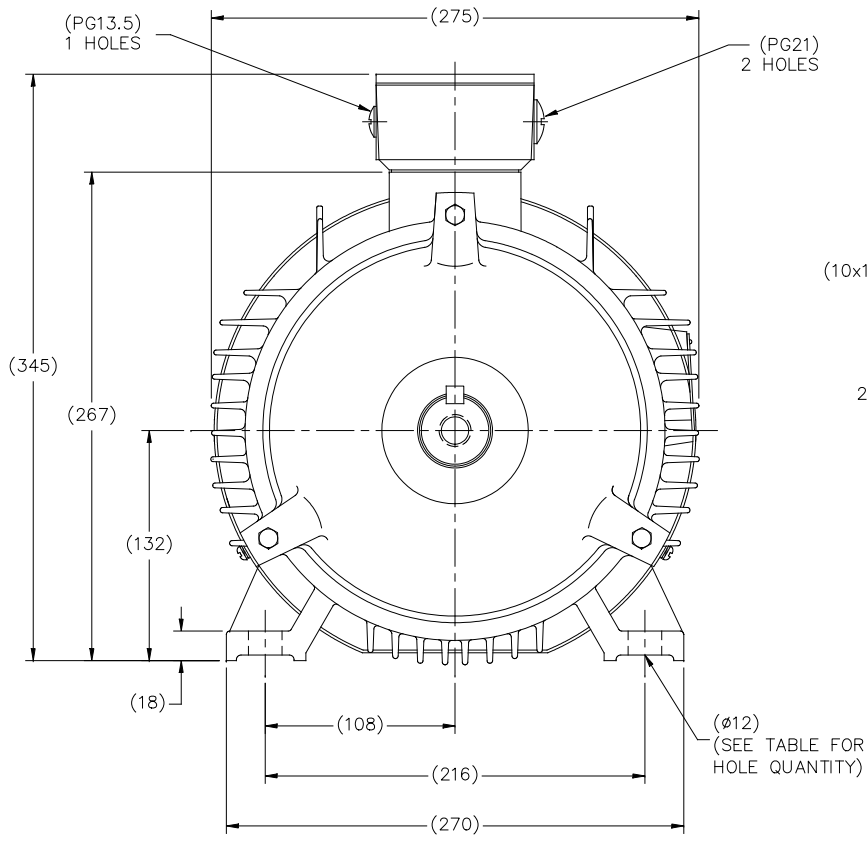
Output HP	10 Hp	Output KW	7.5 kW
Frequency	60 Hz	Voltage	230/460 V
Current	24.0/12.0 A	Speed	1765 rpm
Service Factor	1.15	Phase	3
Efficiency	91.7 %	Power Factor	85
Duty	Continuous	Insulation Class	F
Design Code	B	KVA Code	J
Frame	132M	Enclosure	Totally Enclosed Fan Cooled
Thermal Protection	No	Ambient Temperature	40 °C
Drive End Bearing Size	6308	Opp Drive End Bearing Size	6207
UL	No	CSA	Y
CE	Y	IP Code	55

Technical Specifications

Electrical Type	Squirrel Cage Inverter Rated	Starting Method	Line Or Inverter
Poles	4	Rotation	Reversible
Resistance Main	.8 Ohms	Mounting	Rigid Base
Motor Orientation	Horizontal	Drive End Bearing	Ball
Opp Drive End Bearing	Ball	Frame Material	Cast Iron
Shaft Type	IEC	Overall Length	19.76 in
Shaft Diameter	1.500 in	Shaft Extension	3.14 in
Assembly/Box Mounting	F3		
Outline Drawing	SS622237	Connection Drawing	004172-03

This is an uncontrolled document once printed or downloaded and is subject to change without notice. Date Created:03/11/2020

SS622237



(DRAWING NOT TO SCALE)

(DIMENSIONS ARE IN MILLIMETERS)

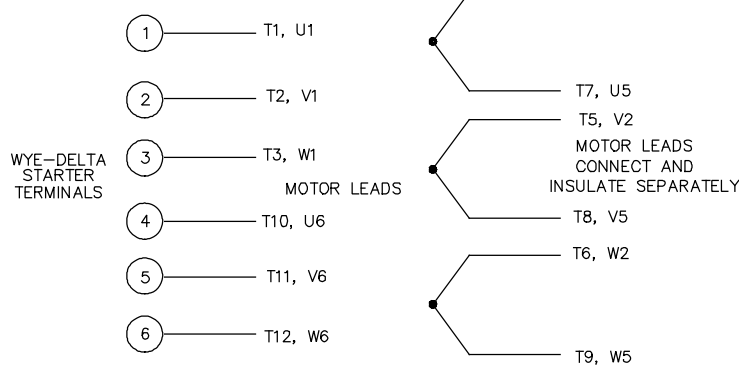
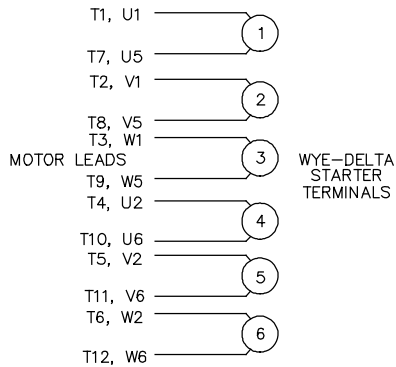
DF132S	4	461	140	186
DF132M	4	499	178	224
FRAME	# HOLES	L	B	BB

		TOLERANCES UNLESS SPECIFIED		REGAL™ Regal Beloit America, Inc.	DRAWN MSG 11-16-2010	
		DEC.	METRIC		CHK	MJS 11-18-2010
4	TABLE AND DIMENSIONS UPDATED	NK 07-05-18	NK .X ±2.5	TITLE OUTLINE - IEC PREMIUM DF132-R FRAME	APPD	SB 11-18-2010
3	(4) FOOT HOLES WERE (6) ECO-0130304	WGJ 10-2-17	EMH .XX ±.76		SCALE	NONE
2	REV CAT# FROM BLOCK-FOR CAT# SEE SS622237-CAT	MOL 11-29-12	.XXX ±.127		REF	
1	REV PG13.5 HOLES WERE 2 QTY	MOL 09-24-12	.XXX ±.0127		FMF	HEBEL
NO.	REVISION	BY & DATE	CHK ANG ±7'30"	FINISH	PREV	
THIS DRAWING IN DESIGN AND DETAIL IS OUR PROPERTY AND MUST NOT BE USED EXCEPT IN CONNECTION WITH OUR WORK ALL RIGHTS OF DESIGN AND INVENTION ARE RESERVED THIS IS AN ELECTRONICALLY GENERATED DOCUMENT - DO NOT SCALE THIS PRINT				RFP 11-18-2010	CAD FILE SS622237	SIZE B
				DIST	DRAWING NO. SS622237	PAGE OF REV. H

WYE - DELTA STARTING USEABLE ON 2,4 AND 6 POLE MOTORS.

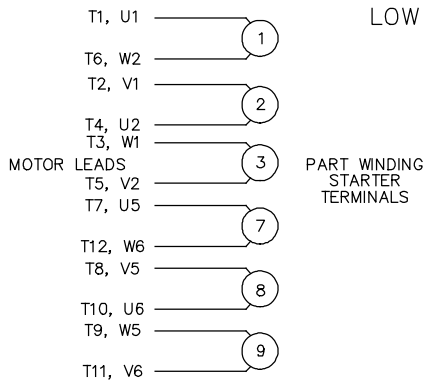
LOW VOLTAGE CONNECTION

HIGH VOLTAGE CONNECTION



REFER TO THE WYE-DELTA STARTER CONNECTION INSTRUCTIONS FOR PROPER CONNECTION OF POWER LINES TO STARTER.

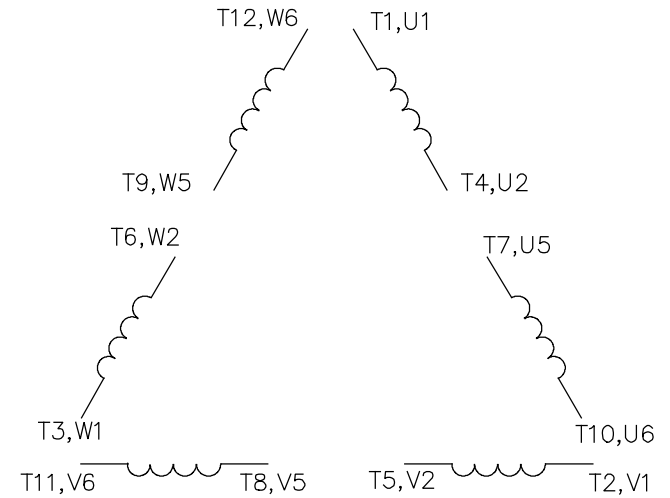
PART WINDING START USABLE ON 4 & 6 POLE MOTORS
LOW VOLTAGE CONNECTION ONLY



REFER TO THE PART WINDING STARTER INSTRUCTIONS FOR PROPER CONNECTION OF POWER LINES TO STARTER.

REFER TO THE CUTLER - HAMMER OR EQUIV. FOR PROPER SELECTION OF OVERLOAD HEATER COILS.

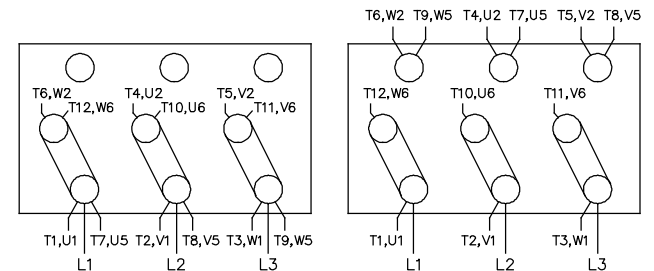
LINE LEADS



12 LEAD DELTA CONNECTION ACROSS THE LINE START (FOR Y START DELTA RUN, REMOVE THE JUMPERS)

LOW VOLTAGE (MUST BE REWIRED AS SHOWN)

HIGH VOLTAGE (FACTORY WIRED FOR HIGH VOLTAGE AS SHOWN)



				TOLERANCES UNLESS SPECIFIED		REGAL™ Regal Beloit America, Inc.	DRAWN NK 06/28/18			
				DEC.	INCHES		CHK NK 06/28/18			
				.X	±.1	TITLE DELTA - WYE CONNECTION DIAGRAM IEC CAST IRON MOTORS	APPD SR 06/28/18			
				.XX	±.02		SCALE			
				.XXX	±.005		REF			
A	NEW DRAWING	NK 06/28/2018	SR	.XXXX	±.0005		MAT'L.	FMF		
NO.	REVISION	BY & DATE	CHK	ANG	±7'30"	FINISH	PREV			
THIS DRAWING IN DESIGN AND DETAIL IS OUR PROPERTY AND MUST NOT BE USED EXCEPT IN CONNECTION WITH OUR WORK ALL RIGHTS OF DESIGN AND INVENTION ARE RESERVED THIS IS AN ELECTRONICALLY GENERATED DOCUMENT - DO NOT SCALE THIS PRINT				RFP	SR 06/28/18	CAD FILE 00417203	SIZE A	DRAWING NO. 004172-03	PAGE OF	REV. A
				DIST	WA-PR					

Data Sheet

Date: 29-06-2017
 Customer: _____
 Attention: _____
 Submitted by: FAREEDA DUDEKULA



132MTC6536

Submittal

Data @ 460 V

Motor Load Data

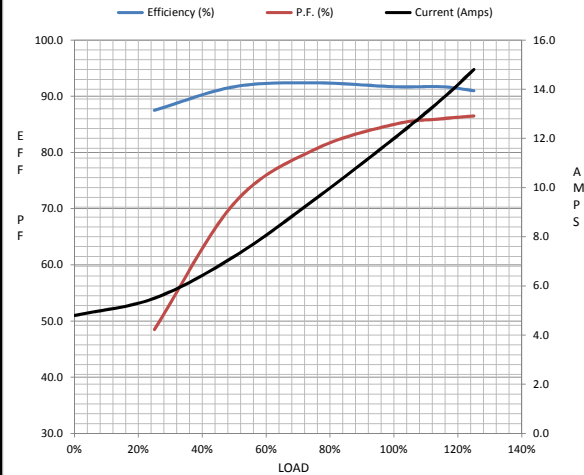
Load	0%	25%	50%	75%	100%	115%	125%	LR
Current (Amps)	4.8	5.5	7.2	9.5	12.0	13.6	14.8	89.5
Torque (ft-lb)	0.00	7.3	14.7	22.2	29.8	34.3	37.4	59.0
RPM	1800	1790	1785	1775	1765	1,760	1755	0
Efficiency (%)		87.5	91.7	92.4	91.7	91.7	91.0	
P.F. (%)	6.0	48.5	71.0	80.5	85.0	86.0	86.5	40.0

Motor Speed Data

	LR	Pull-Up	BD	Rated	Idle
Speed (RPM)	0	750	1575	1765	1800
Current (Amps)	89.5	83.0	54.3	12.0	4.8
Torque (ft-lb)	59.0	57.0	96.5	29.8	0.00

Information Block

HP	10.0			
Sync. RPM	1800			
Frame	132			
Enclosure	TEFC			
Construction	TFC			
Voltage	30/460#200/40V			
Frequency	60 Hz			
Design	A			
LR Code letter	J			
Service Factor	1.15			
Temp Rise @ FL	37 ° C			
Duty	CONT			
Ambient	40 ° C			
Elevation	1,000 feet			
Rotor/Shaft wk ²	0.00 Lb-Ft ²			
Ref Wdg	T10704027 NONE			
Sound Pressure @ 1M	46 dBA			
VFD Rating	CONSTANT 2:1			
Outline Dwg	SS62237			
Conn. Diag	004172.03			
Additional Specifications:				
0				
365THFS8036				
EQUIV CKT (OHMS / PHASE)				
R1	R2	X1	X2	Xm
0.0000	0.0000	0.0000	0.0000	0.0000



Speed -Torque Curve

